

Available for Lease

# 8880 Cal Center Drive

Rancho Cordova, CA



## Highlights

- Class A Office Space
- Rental Rate Starting at \$1.95
- Excellent Access to Highway 50
- Parking: 4.01/1,000 SF
- 24/7 Access, 24-hour security
- Conference Room with Kitchen Available for Tenant's Use
- Fitness Center with Showers
- Beautiful Lobby with Seating
- Close to Restaurants



**NAI Aguer Havelock**

Commercial Real Estate Services, Worldwide.

The information contained herein has been given to us by the owner of the property or other sources we deem reliable. We have no reason to doubt its accuracy, but we do not guarantee it. All information should be verified prior to purchase or lease.

For information, please contact our exclusive listing agents:

**Tom Aguer, CCIM SIOR**

Tom@aguerhavelock.com

direct 916 563 7827

CA DRE #00481113

2485 Natomas Park Drive, Suite 150 ■ Sacramento, CA 95833

tel 916 563 7555 fax 916 563 7554 ■ www.naiaguerhavelock.com

**Matt Havelock, CCIM SIOR**

Matt@aguerhavelock.com

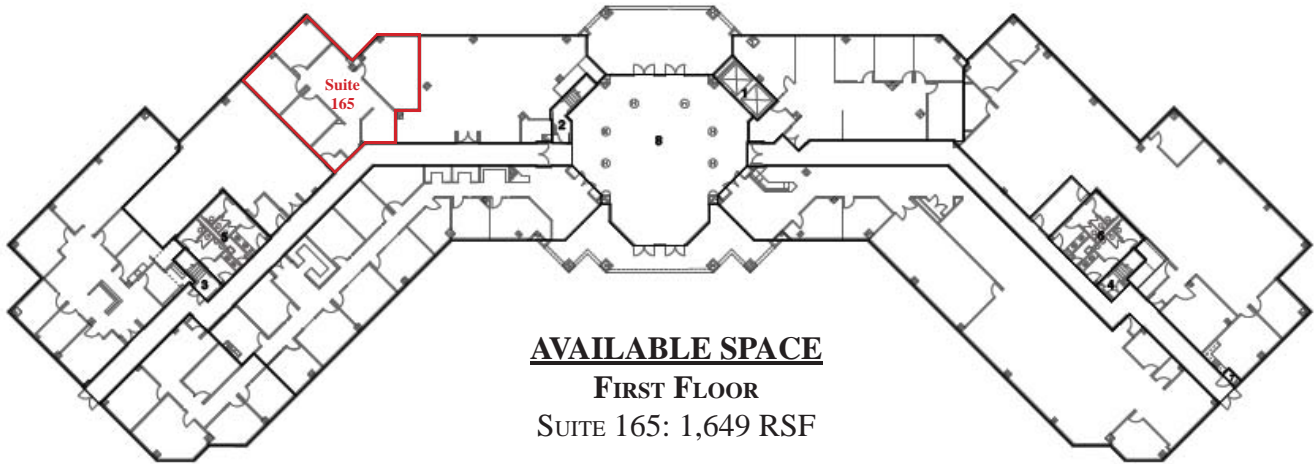
direct 916 563 7667

CA DRE # 00930194

Available for Lease

# 8880 Cal Center Drive

Rancho Cordova, CA

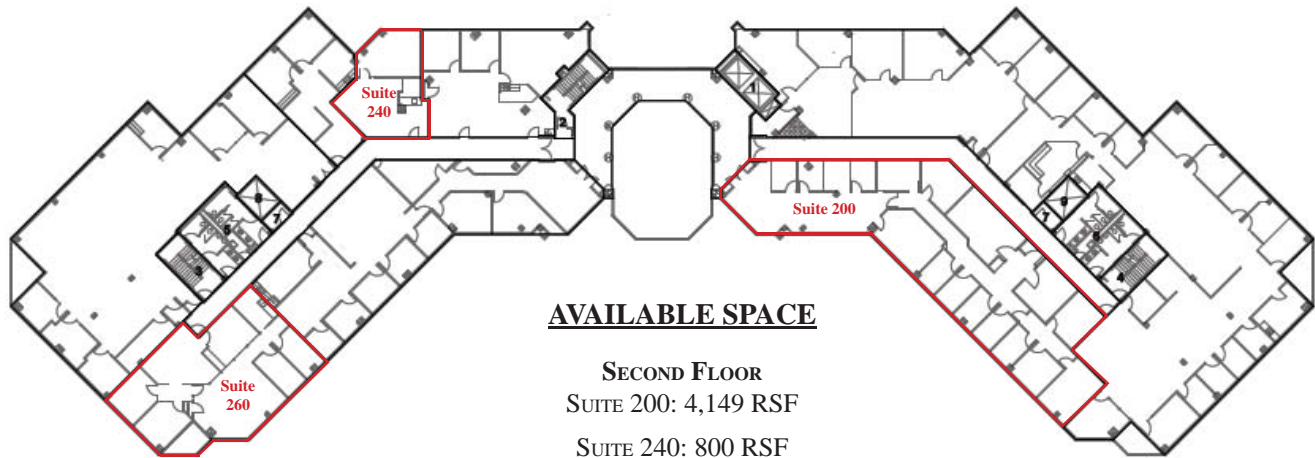


## AVAILABLE SPACE

### FIRST FLOOR

SUITE 165: 1,649 RSF

*\*floor plan not to scale.*



## AVAILABLE SPACE

### SECOND FLOOR

SUITE 200: 4,149 RSF

SUITE 240: 800 RSF

SUITE 260: 2,010 RSF

*\*floor plan not to scale.*

**NAI Aguer Havelock**  
Commercial Real Estate Services, Worldwide.

The information contained herein has been given to us by the owner of the property or other sources we deem reliable. We have no reason to doubt its accuracy, but we do not guarantee it. All information should be verified prior to purchase or lease.

For information, please contact our exclusive listing agents:

**Tom Aguer, CCIM SIOR**

Tom@aguerhavelock.com

direct 916 563 7827

CA DRE #00481113

2485 Natomas Park Drive, Suite 150 ■ Sacramento, CA 95833

tel 916 563 7555 fax 916 563 7554 ■ www.naiaguerhavelock.com

**Matt Havelock, CCIM SIOR**

Matt@aguerhavelock.com

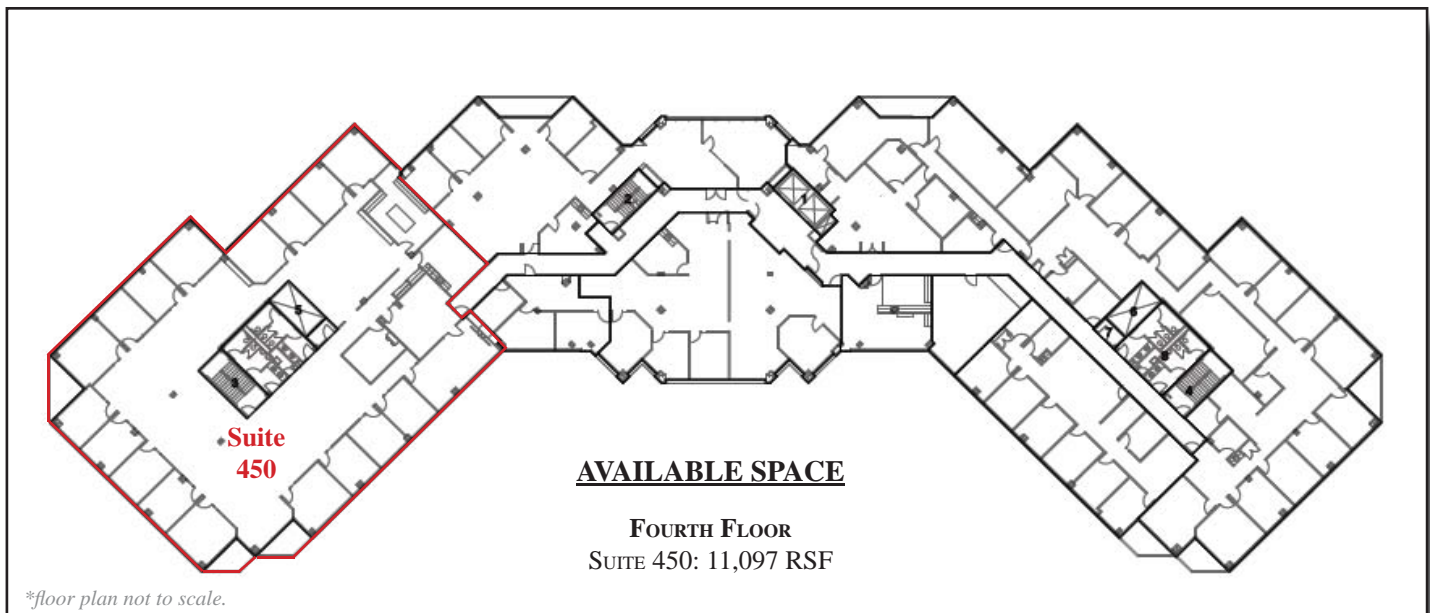
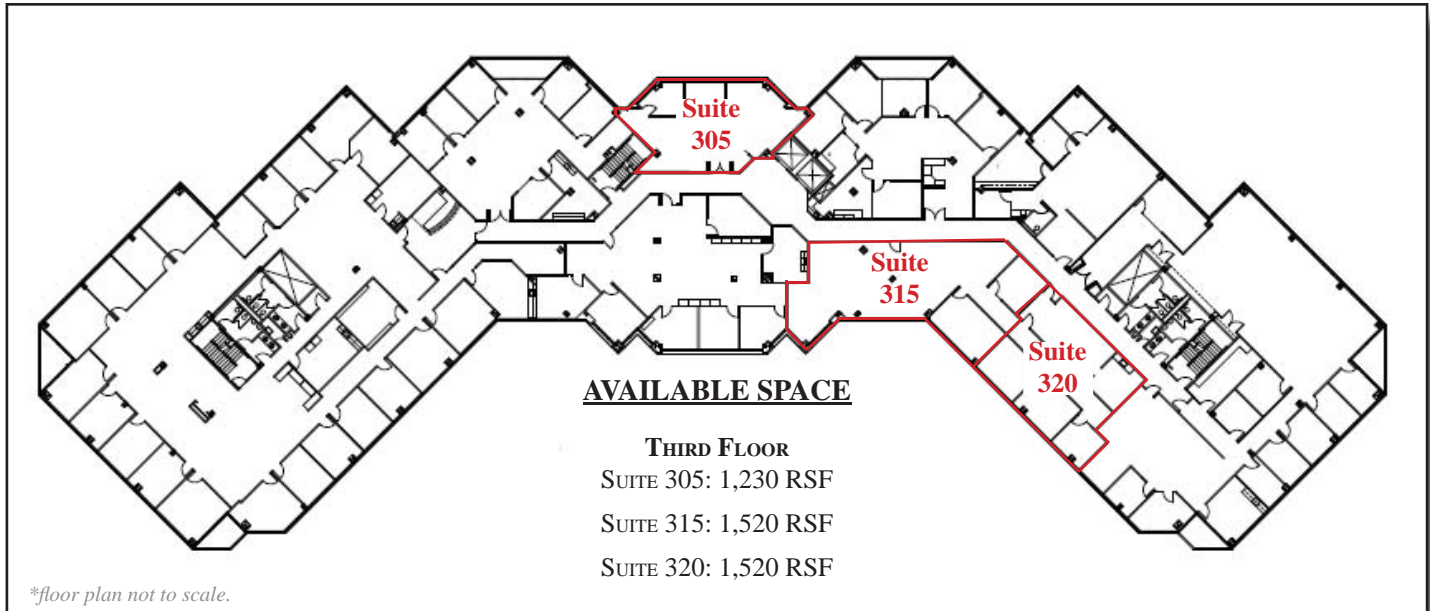
direct 916 563 7667

CA DRE # 00930194

Available for Lease

# 8880 Cal Center Drive

Rancho Cordova, CA



**NAI Aguer Havelock**  
Commercial Real Estate Services, Worldwide.

The information contained herein has been given to us by the owner of the property or other sources we deem reliable. We have no reason to doubt its accuracy, but we do not guarantee it. All information should be verified prior to purchase or lease.

For information, please contact our exclusive listing agents:

**Tom Aguer, CCIM SIOR**

Tom@aguerhavelock.com

direct 916 563 7827

CA DRE #00481113

2485 Natomas Park Drive, Suite 150 ■ Sacramento, CA 95833

tel 916 563 7555 fax 916 563 7554 ■ www.naiaguerhavelock.com

**Matt Havelock, CCIM SIOR**

Matt@aguerhavelock.com

direct 916 563 7667

CA DRE # 00930194