

Available for Lease  
**2750 Gateway Oaks Drive**  
 Sacramento, CA

Highlights

**Class A Office Space**

Suite 320: 3,081 SF Available

Rental Rate Starting at \$ 1.90

Parking: 303 free Surface Spaces  
 Ratio of 3.72/1,000 SF

Excellent freeway access to I-5 and I-80

Close proximity to lodging, health club, restaurants, shopping, banking & child care facilities

Five minutes from Capitol and seven minutes from Sacramento International Airport



**NAI Aguer Havelock**

Commercial Real Estate Services, Worldwide.

The information contained herein has been given to us by the owner of the property or other sources we deem reliable. We have no reason to doubt its accuracy, but we do not guarantee it. All information should be verified prior to purchase or lease.

For information, please contact our exclusive listing agents:

**Tom Aguer, CCIM SIOR**

Tom@aguerhavelock.com

916 563 7827

CA DRE #00481113

2485 Natomas Park Drive, Suite 150 ■ Sacramento, CA 95833

tel 916 563 7555 ■ fax 916 563 7554 ■ www.naiaguerhavelock.com

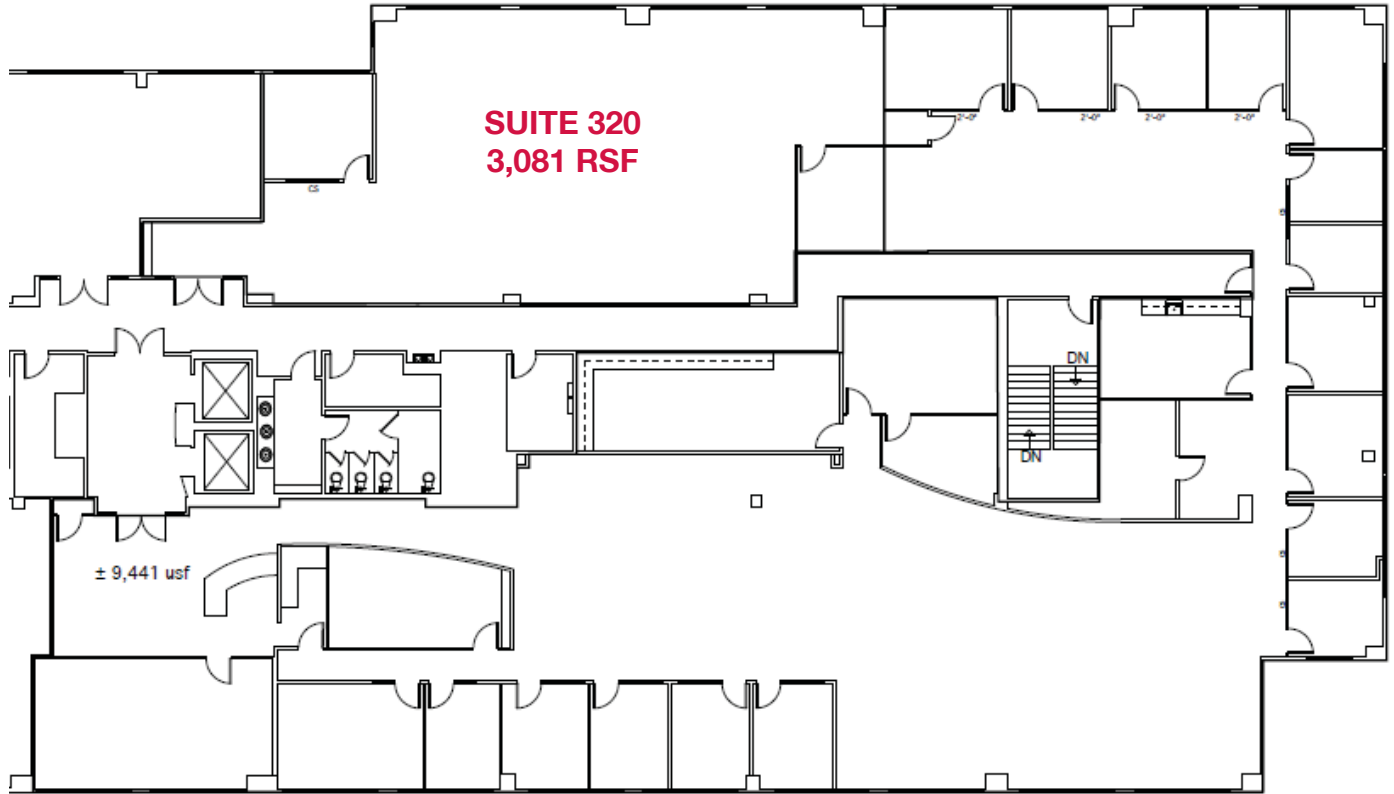
**Matt Havelock, CCIM SIOR**

Matt@aguerhavelock.com

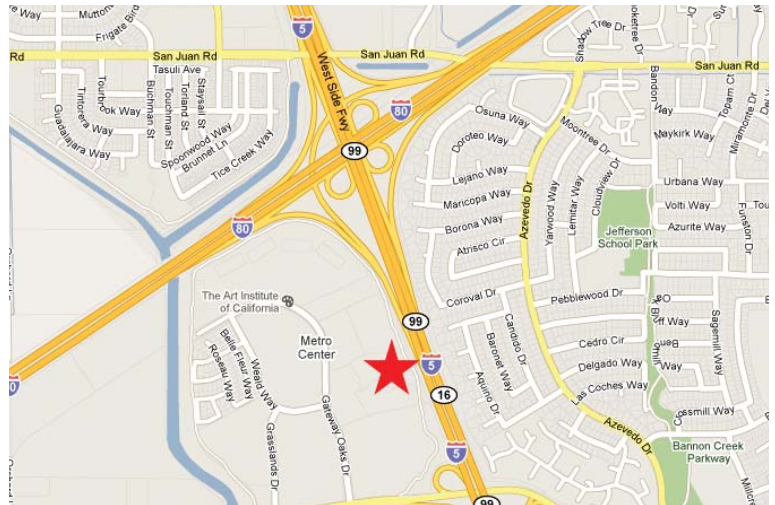
916 563 7667

CA DRE #00930194

2750 Gateway Oaks Drive  
Sacramento, CA



\*Floor plan not to scale.



**NAI Aguer Havelock**

Commercial Real Estate Services, Worldwide.

The information contained herein has been given to us by the owner of the property or other sources we deem reliable. We have no reason to doubt its accuracy, but we do not guarantee it. All information should be verified prior to purchase or lease.

For information, please contact our exclusive listing agents:

**Tom Aguer, CCIM SIOR**

Tom@aguerhavelock.com

916 563 7827

CA DRE #00481113

2485 Natomas Park Drive, Suite 150 ■ Sacramento, CA 95833

tel 916 563 7555 ■ fax 916 563 7554 ■ www.naiaguerhavelock.com

**Matt Havelock, CCIM SIOR**

Matt@aguerhavelock.com

916 563 7667

CA DRE #00930194